



PREPARING THE TREATMENT

F

Job selection			
02)	90 l/ha *	ISO015	Green
>06)	240 l/ha	ISO04	Red

> Selected job
* Active job

ONLY enabled jobs are displayed

1 Job selection



Reset all data?

> No
Yes

Tank

Filling up	:	3000 l
>Level	:	1540 l
Filled quantity	:	0 l

> Selected setting

2 Tank Filling

Tank capacity

Advanced Setup/
Tank/
Capacity: 3000 l

Liquid in tank:

after filling enter the level of liquid
contained in the tank



ATTENTION! Maximum level reached

Stop the filling pump:
you have reached the maximum tank capacity



If the filling flow meter is connected,
the display will also show the filling status.



Used to scroll data
or edit values



Sets data to zero



Confirms access
or change to data



Quits function
or changes to data

USE

1 Manual treatment control

Man

Man. Main ON Log OFF 15:09

99 L/ha

21.0 km/h

21.0 bar 425 rpm 55.1 l/min

1

Enable manual operation

2

Turn on the section valves required

3

Drive to the start of the field

4

Set the main switch to ON

5

Run the treatment

6

Use the control valve switch
to adjust the desired quantity

2 Automatic treatment control

90 l/ha

90 l/ha Main ON Log OFF 15:09

99 L/ha +10%

21.0 km/h

21.0 bar 425 rpm 55.1 l/min

1

Enable automatic operation

2

Turn on the section valves required

3

Drive to the start of the field

4

Set the main switch to ON

5

Run the treatment

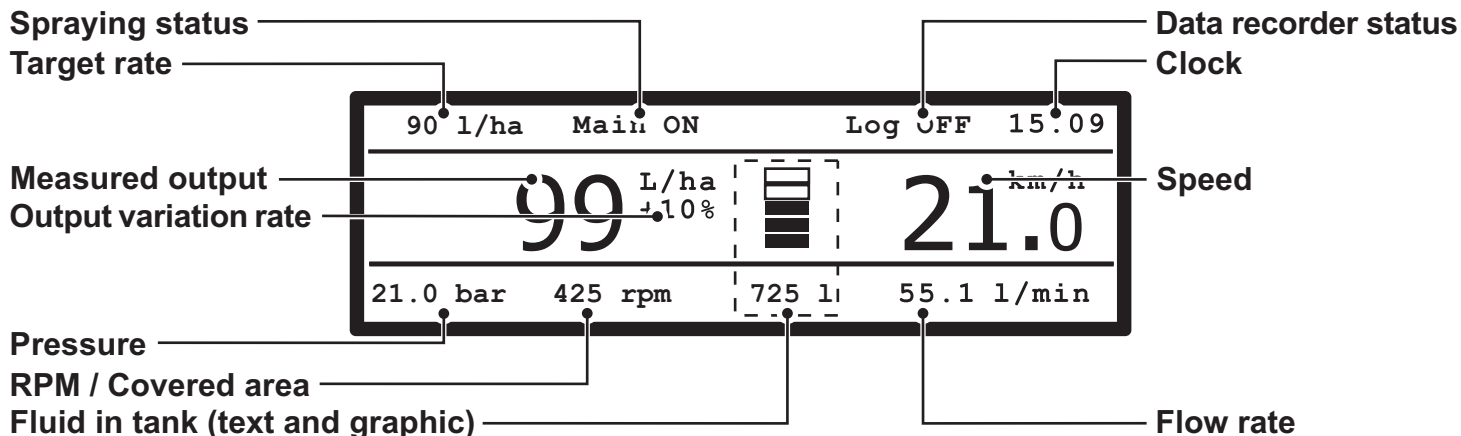
6

Use the control valve switch
to temporarily modify the metering

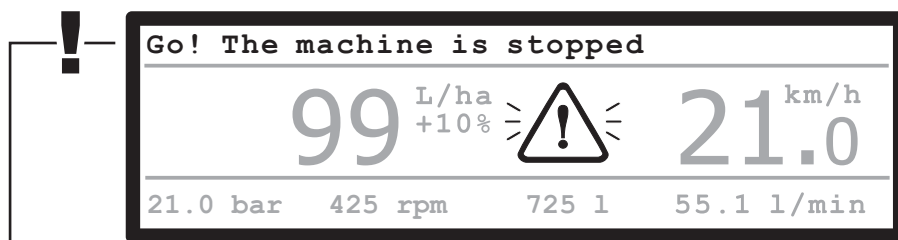


The computer keeps
the set distribution value constant

KEY TO ITEMS ON DISPLAY



OPERATING ALARMS



Disable spraying command!

Go! The machine is stopped

Start pump! No flowrate

Go slow! High pressure

Go fast! Insufficient pressure

Go slow! Insufficient flowrate

Go fast! High flowrate

Reduce rotation speed!

Increase rotation speed!

Stop immediately! Pump fault

Flowmeter out of range

SD card not found!

SD card write protected!

SD card full!

SETUP.BIN: File not found!

Signal out of range! Check transducer

Check nozzles! Highly worn

- Main switch ON at computer startup

- Main switch ON and machine stationary

- Main switch ON, machine stationary but zero capacity

- Pressure exceeds maximum level permitted for nozzle in use

- Pressure does not reach minimum value for nozzle in use

- Capacity does not reach value required for distribution

- Capacity exceeds value required for distribution

- RPM exceeds maximum value permitted

- RPM does not reach minimum value

- Pump oil level too low or mixed with water

- Capacity exceeds limits permitted by flow meter

- Memory board not inserted correctly

- Memory board locked

- No space available on memory board

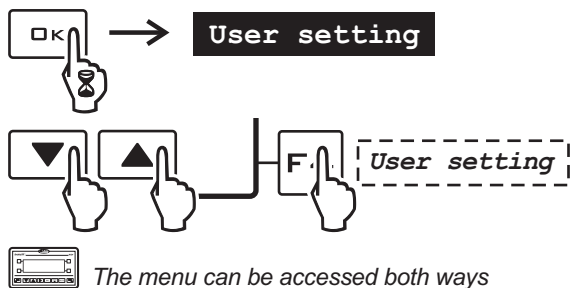
- PC configuration has not been saved

- Faulty pressure values detected

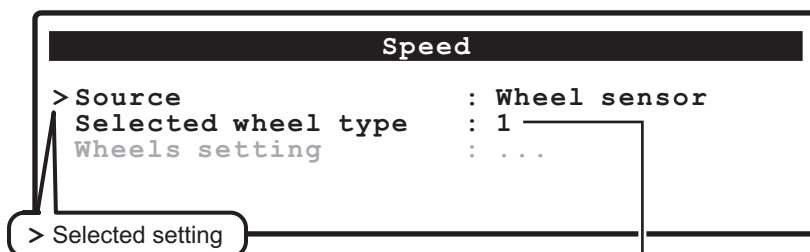
- Difference between values read by pressure sensor and flow meter exceeds maximum value permitted

ONLY with automatic operation

SELECTING THE WHEEL TYPE (CONSTANT)



The menu can be accessed both ways



Select the wheel type (3 types available)



Used to scroll data or edit values



Sets data to zero



Confirms access or change to data



Quits function or changes to data

